



**Champlain Stone**® LTD.  
QUARRIERS OF NATURAL STONE



**South Bay**  
QUARTZITE<sup>®</sup>



Mosaic Pattern



Roughly Squared



Ashlar



Ledge

**American**  
GRANITE<sup>™</sup>



Mosaic Pattern



Roughly Squared



Ashlar



Ledge

**Corinthian**  
GRANITE<sup>®</sup>



Mosaic Pattern



Roughly Squared



Ashlar



Ledge

**Saratoga**  
GRANITE<sup>™</sup>



Mosaic Pattern



Roughly Squared



Ashlar



Ledge

**Wood Creek**  
GRANITE®



Mosaic Pattern



Roughly Squared



Ashlar



Ledge

**1763**  
GRANITE®



Mosaic Pattern



Roughly Squared



Ashlar



Ledge

Special Order  
**Crown Point**  
GRANITE™



Mosaic Pattern



Roughly Squared



Ashlar



Ledge

**Ticonderoga**  
GRANITE®



Mosaic Pattern



Roughly Squared



Ashlar



Ledge

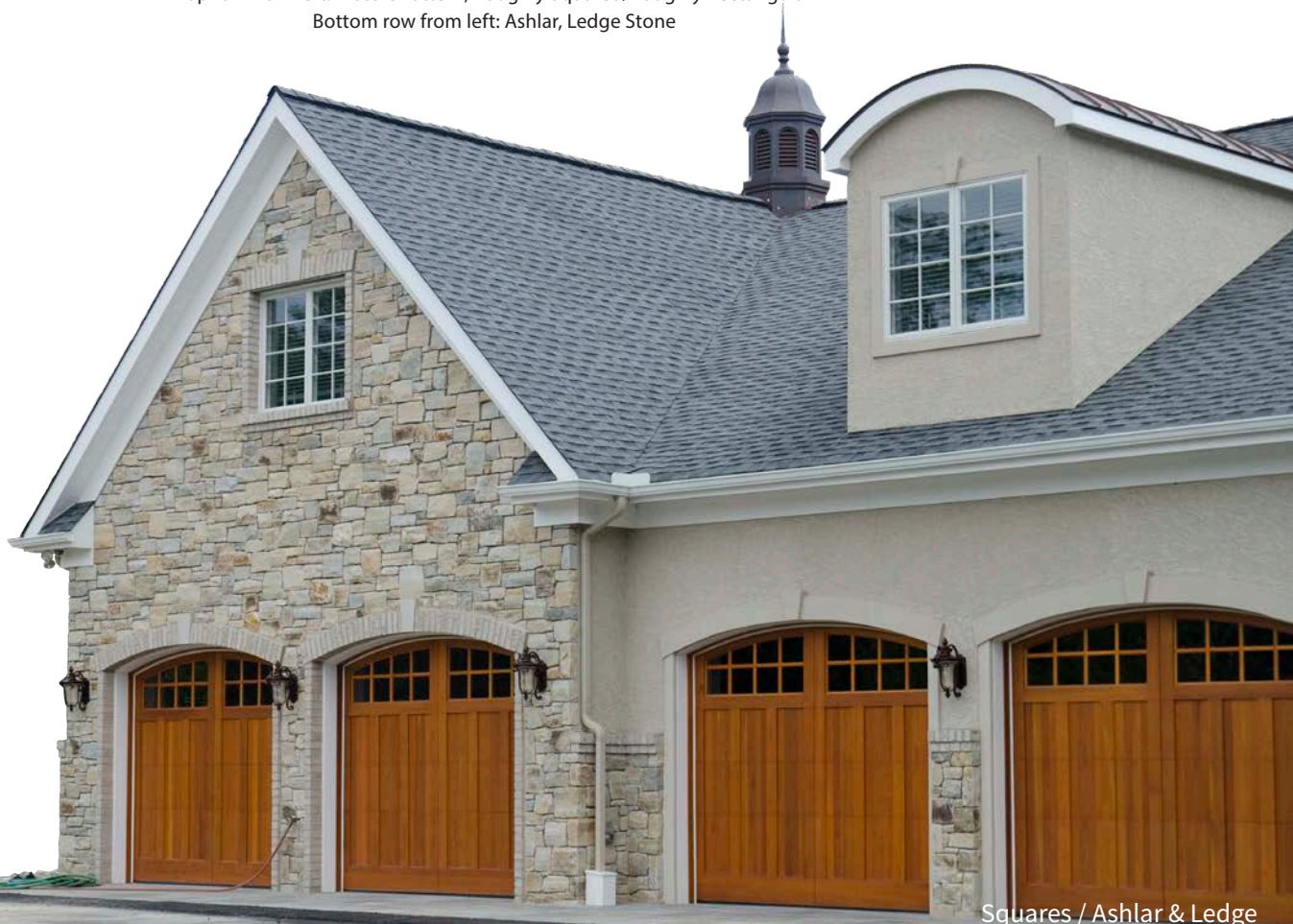
# South Bay QUARTZITE®

A warm and inviting quartzitic sandstone featuring advancing and receding surfaces that resemble a windswept and sandy beach. Visually smooth yet heavily textured, South Bay Quartzite® displays a range of comforting hues in a palette of tan, antique white, ice blue, amber, and brown.

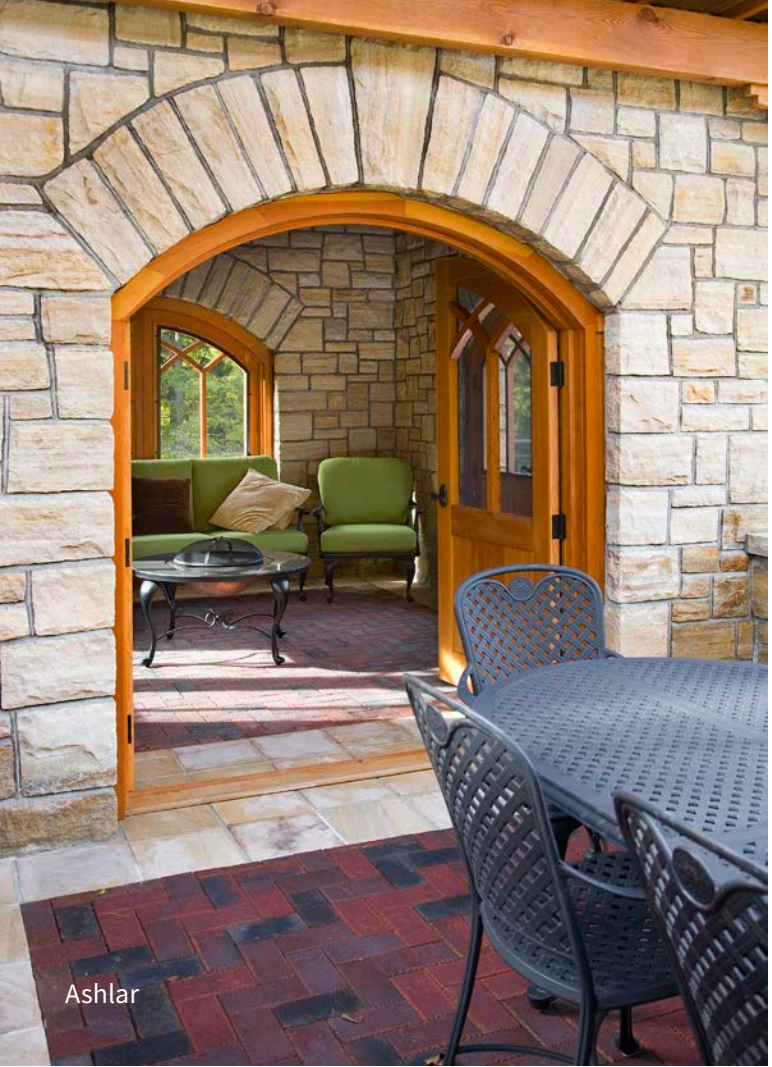
AVAILABLE CUTS - BUILDING STONE & THIN VENEER



Top row from left: Mosaic Pattern, Roughly Squared/Roughly Rectangular  
Bottom row from left: Ashlar, Ledge Stone



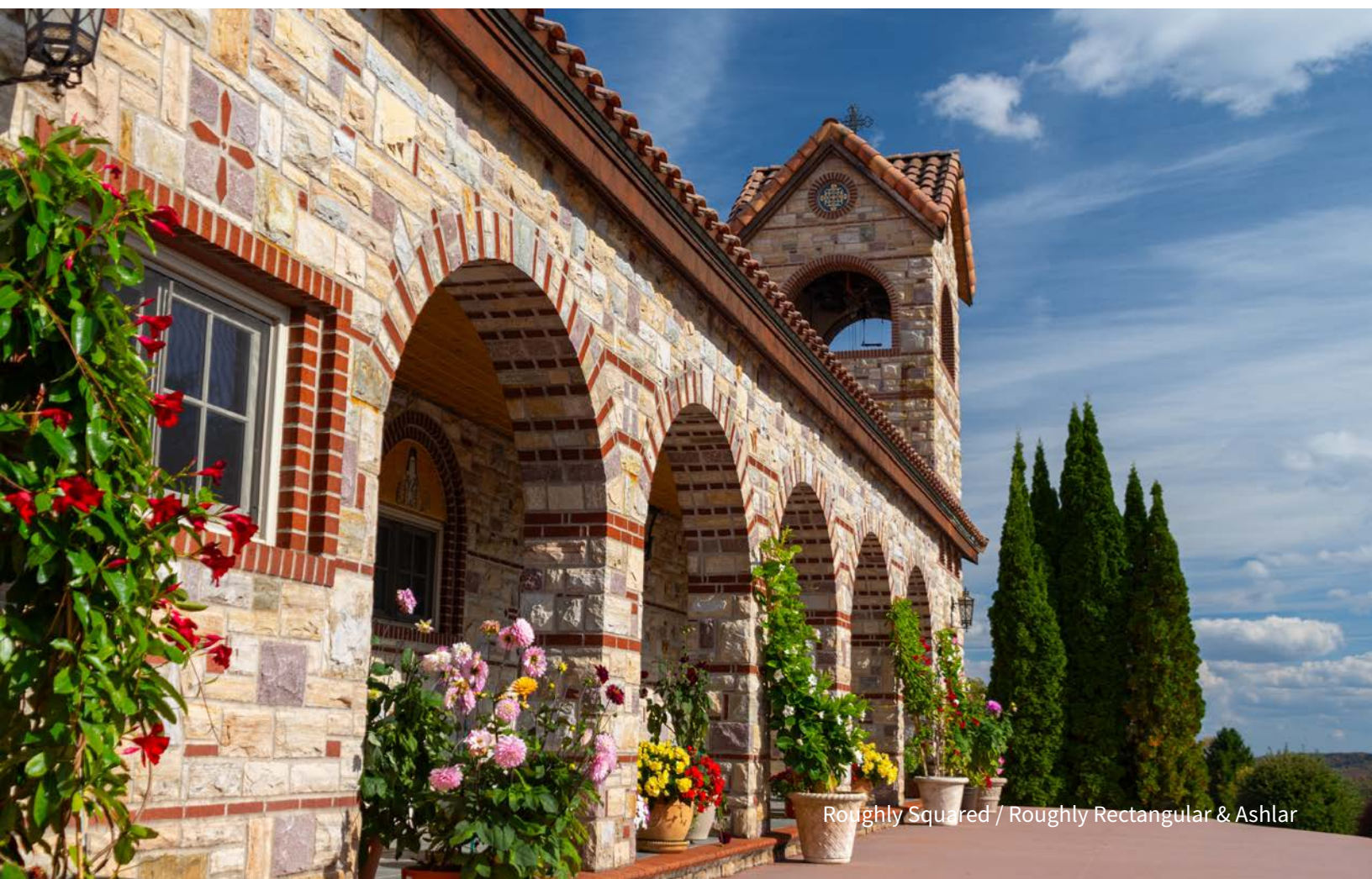
Squares / Ashlar & Ledge



Ashlar



Mosaic



Roughly Squared / Roughly Rectangular & Ashlar

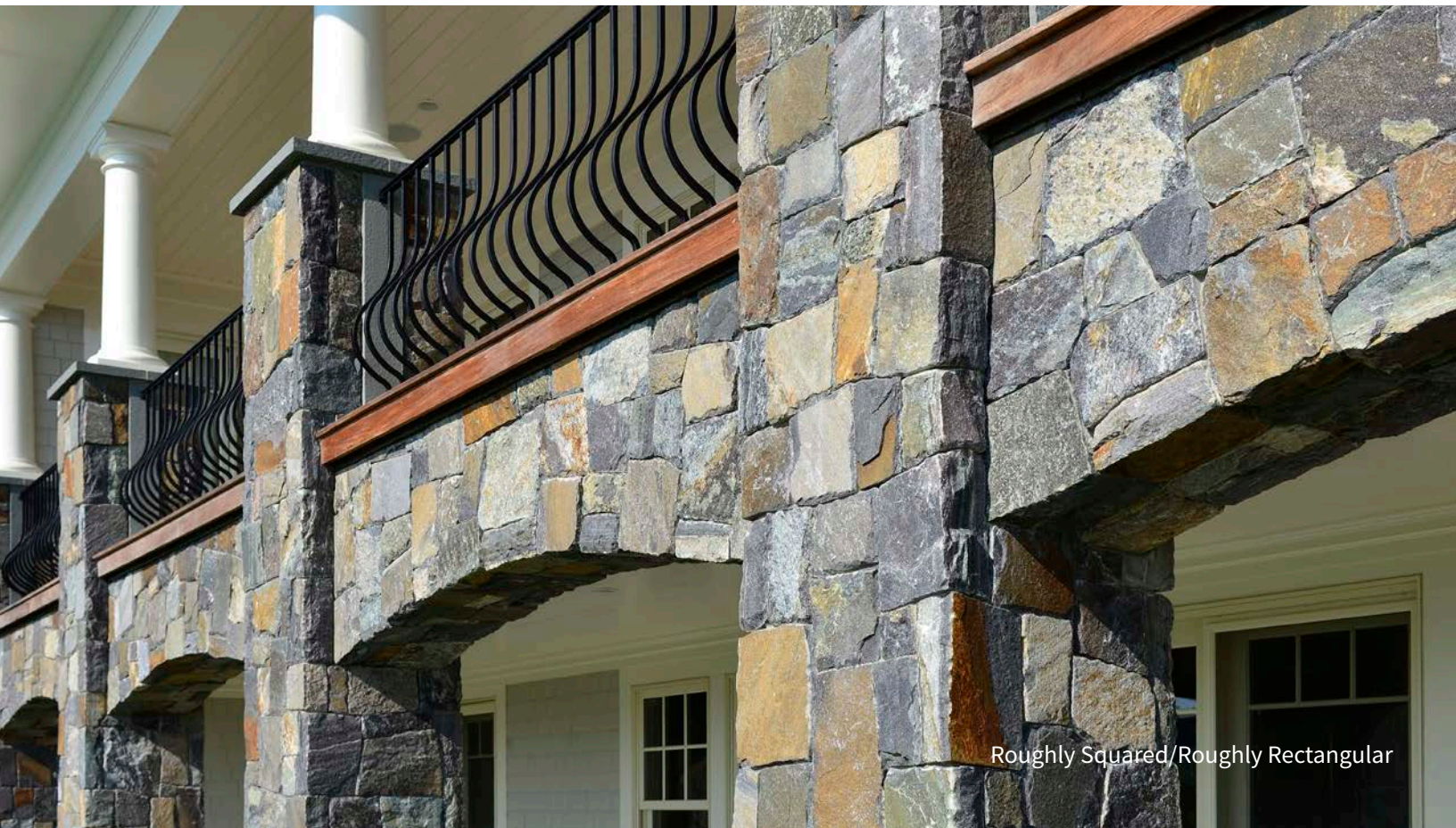
# American GRANITE™

A medium to coarse-grain, weathered granite featuring brown and earth tone surface colors with hand-split faces showing a blend of blue, burgundy, pink, green, brown, black and white. Mica flecks, along with garnet inclusions and quartz crystals, highlight a percentage of this stone.

AVAILABLE CUTS - BUILDING STONE & THIN VENEER



Clockwise from top left: Mosaic Pattern, Roughly Squared/Roughly Rectangular, Ashlar, Ledge Stone



Roughly Squared/Roughly Rectangular



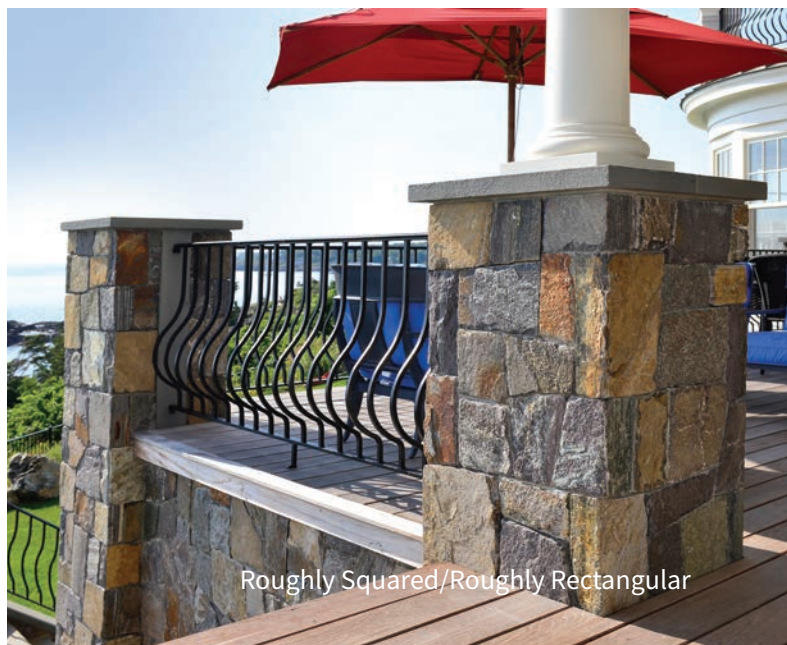
Ledge & Roughly Squared/ Roughly Rectangular Blend



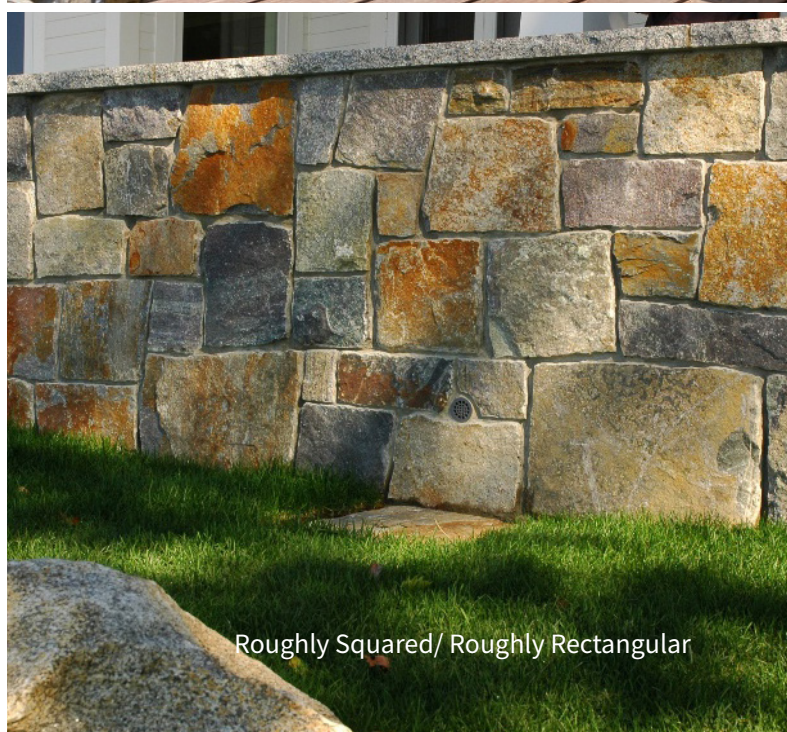
Ashlar & Ledge



Ledge



Roughly Squared/Roughly Rectangular



Roughly Squared/ Roughly Rectangular

# Corinthian GRANITE®

Cool and classic, Corinthian Granite® is an elegant, enduring, medium to coarse grain granite featuring 70% Hudson River blue with a mixture of green, black, pink, brown, burgundy, and white. A small percentage contains black speckles throughout consisting of red and black garnet inclusions and quartz crystals.

AVAILABLE CUTS - BUILDING STONE & THIN VENEER



Top row from left: Mosaic Pattern, Roughly Squared/Roughly Rectangular  
Bottom row from left: Ashlar, Ledge Stone



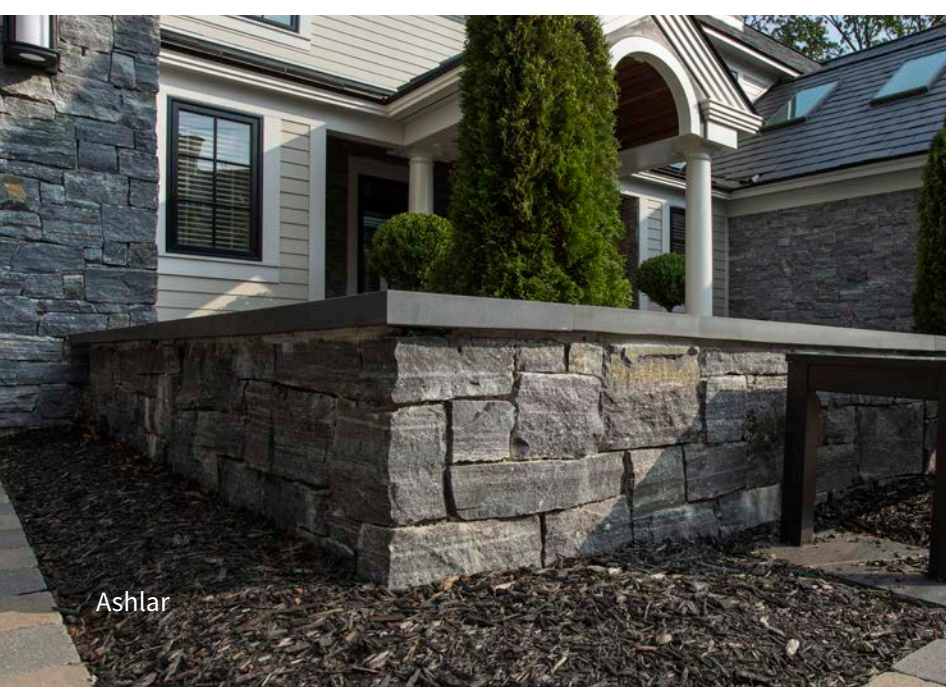




Mosaic



Roughly Squared / Roughly Rectangular



Ashlar



Roughly Squared/ Roughly Rectangular

Our Combination of **American** GRANITE™ & **Corinthian** GRANITE®

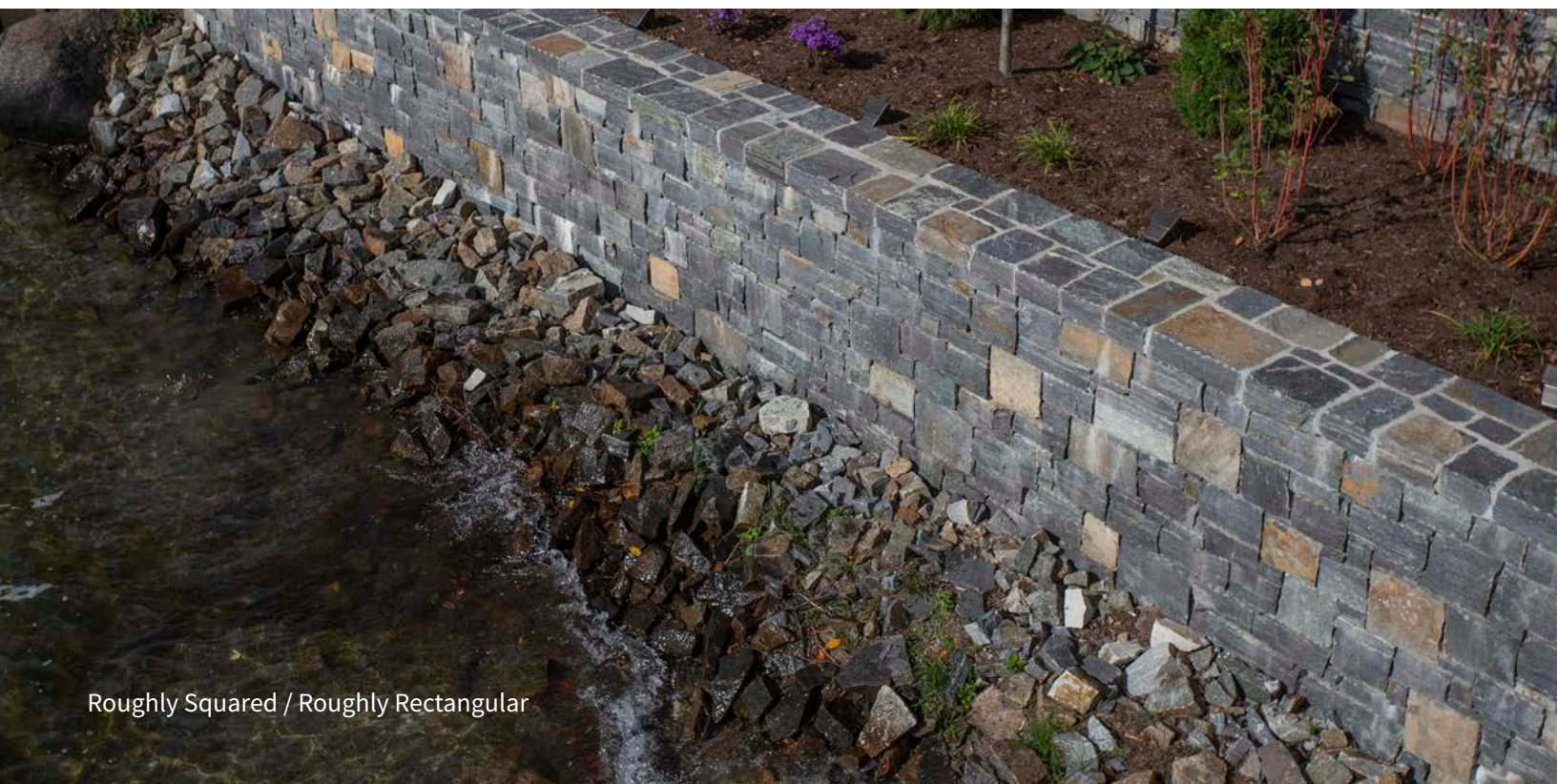
# Saratoga GRANITE™

The ideal complement to both our American and Corinthian Granites, Saratoga Granite™ blends a base color palette of Hudson River blue, deep green, burgundy, and classic white with a lesser percentage of varying weathered faces.

AVAILABLE CUTS - BUILDING STONE & THIN VENEER



Top row from left: Mosaic Pattern, Roughly Squared/Roughly Rectangular  
Bottom row from left: Ashlar, Ledge Stone



Roughly Squared / Roughly Rectangular



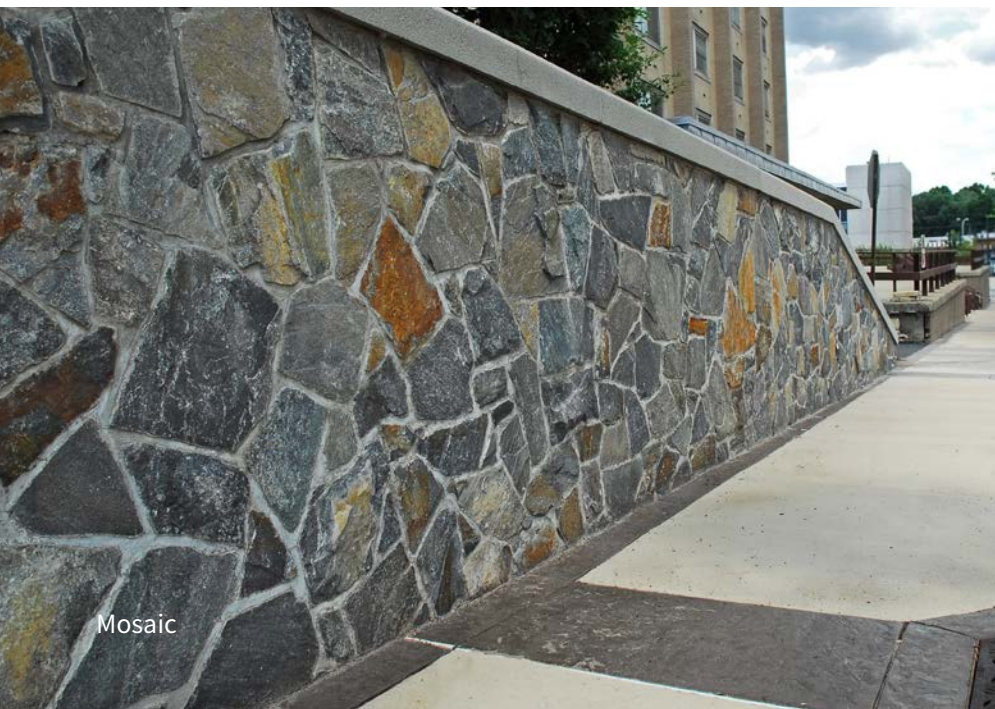
Ledge & Roughly Squared/ Roughly Rectangular Blend



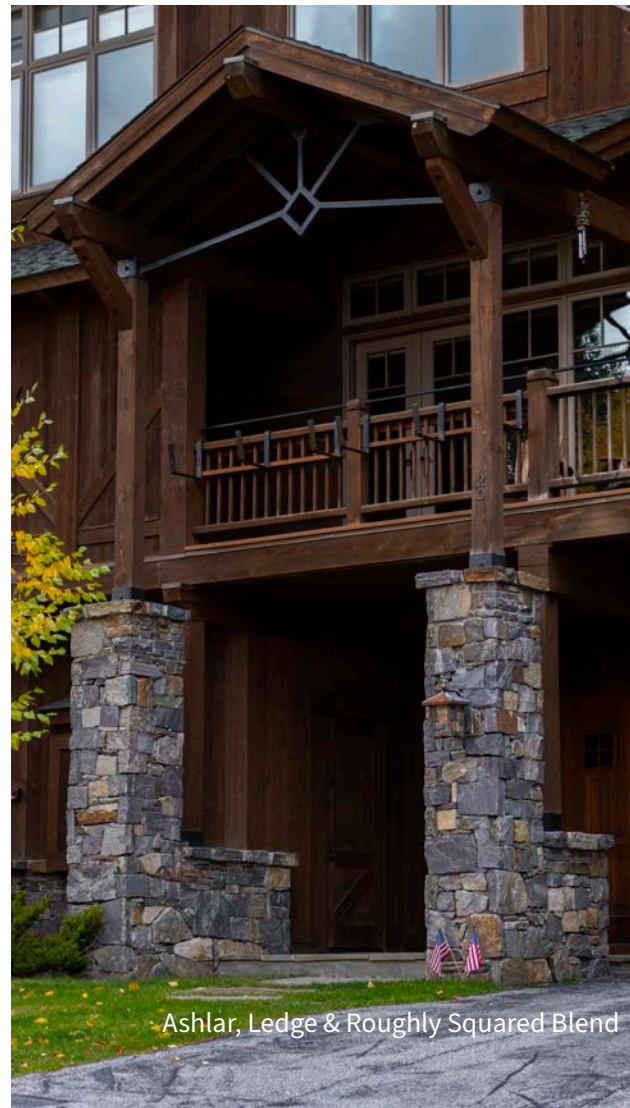
Mosaic



Roughly Squared / Roughly Rectangular



Mosaic



Ashlar, Ledge & Roughly Squared Blend

# Wood Creek GRANITE®

A gray-blue to dark gray granite with patterns of white swirls and striations with occasional quartz and mica inclusions and presenting characteristics of a Westchester Granite blend.

AVAILABLE CUTS - BUILDING STONE & THIN VENEER



Top row from left: Mosaic Pattern, Roughly Squared/Roughly Rectangular  
Bottom row from left: Ashlar, Ledge Stone



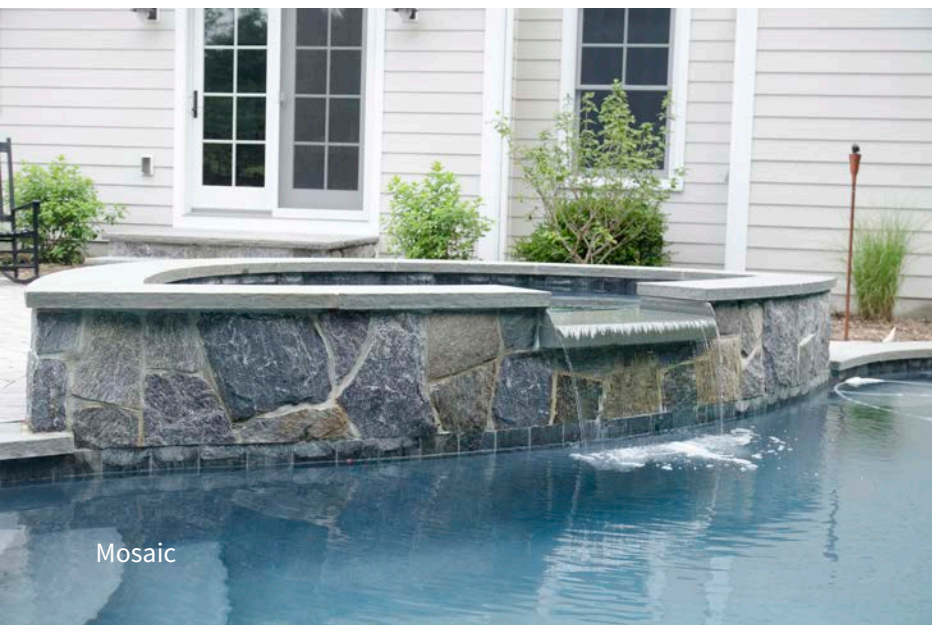
Roughly Squared/ Roughly Rectangular



Roughly Squared/ Roughly Rectangular



Loose Product



Mosaic



Mosaic



Roughly Squared/ Roughly Rectangular

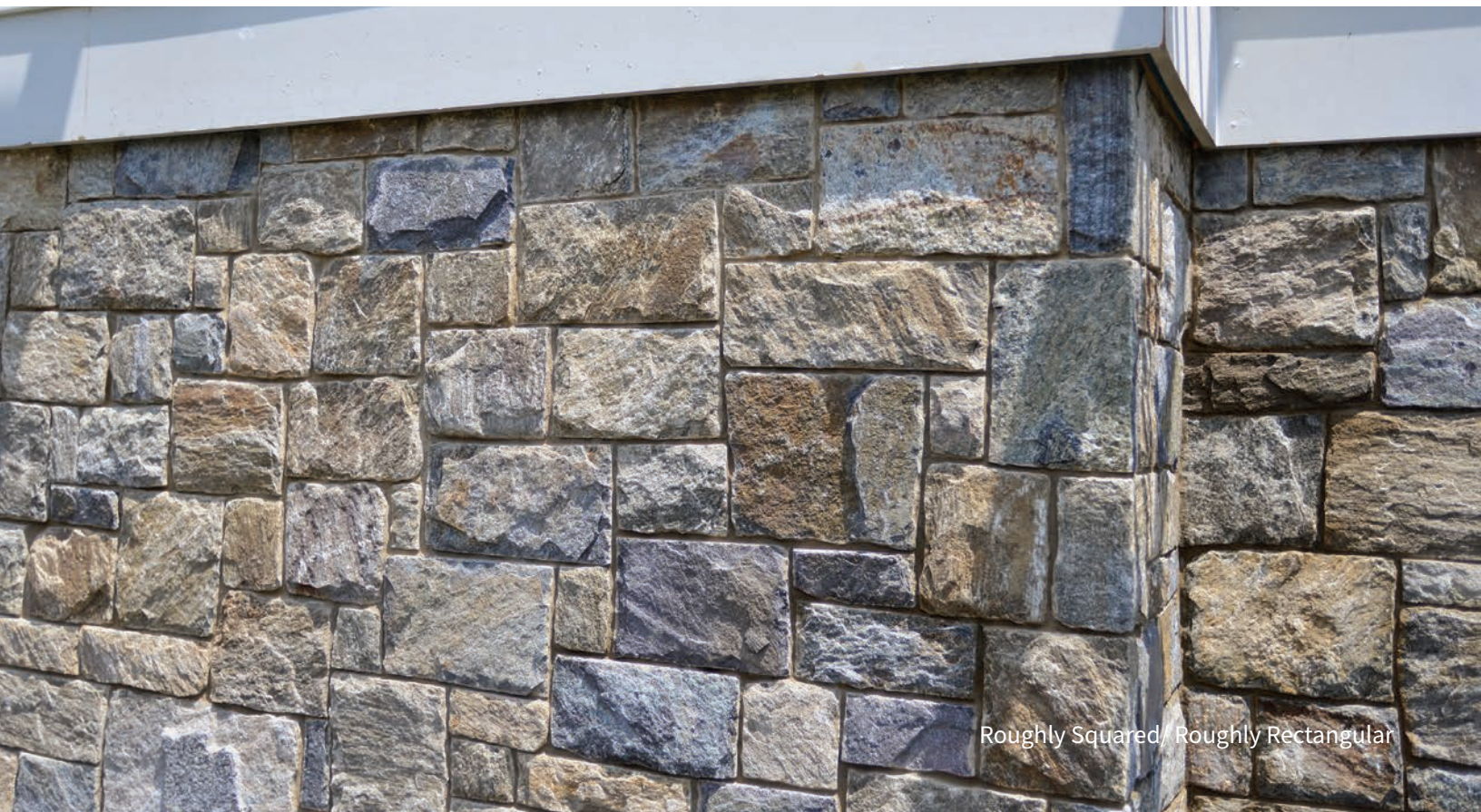
# 1763 GRANITE®

Cozy and sound, 1763 is a hearty, weathered granite showing deep shades of earthen brown and amber. Split faces show a range of blush and blue-grays with some white swirls and striations.

AVAILABLE CUTS - BUILDING STONE & THIN VENEER



Clockwise from top left: Mosaic Pattern, Roughly Squared/Roughly Rectangular, Ledge Stone, Ashlar



Roughly Squared/ Roughly Rectangular



Ashlar



Roughly Squared/ Roughly Rectangular



Roughly Squared/ Roughly Rectangular

Our Combination of Wood Creek GRANITE® & 1763 GRANITE®

# Ticonderoga GRANITE®

Colorful and hearty, Ticonderoga Granite® blends fine-grained and weathered granites within a softer, less earthen color palette that features an appealing mix of gray-blue, caramel, amber, blush, pale green, and deep shades of brown.

AVAILABLE CUTS - BUILDING STONE & THIN VENEER



Top row from left: Mosaic Pattern, Roughly Squared/Roughly Rectangular  
Bottom row from left: Ashlar, Ledge Stone







Roughly Squared/ Roughly Rectangular



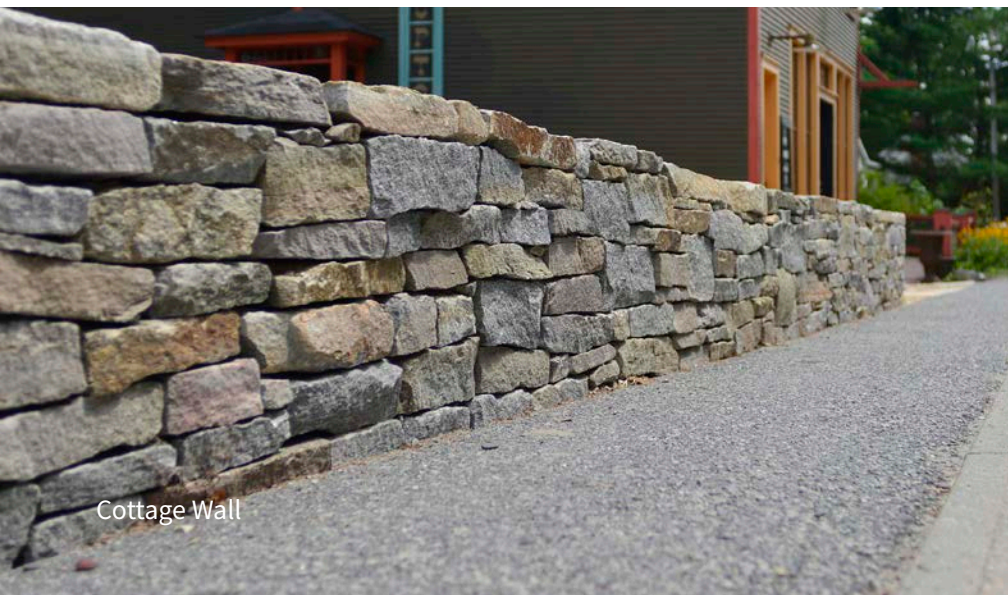
Roughly Squared/ Roughly Rectangular



Mosaic



Step Slabs



Cottage Wall



Cottage Wall

# Adirondack Mtn. FIELDSTONE<sup>®</sup>

A rugged, natural-weather top rock which is reminiscent of the stones used to build the Great Adirondack Mountain camps of the early twentieth century. Available in a wide range of sizes, textures, and colors including weathered gray, brown, and aged buff.



## From baseballs to basketballs:

While typical packaging consists of a "variety pack" of sizes and colors, custom options are available.







## AVAILABLE CUT LANDSCAPING STONE

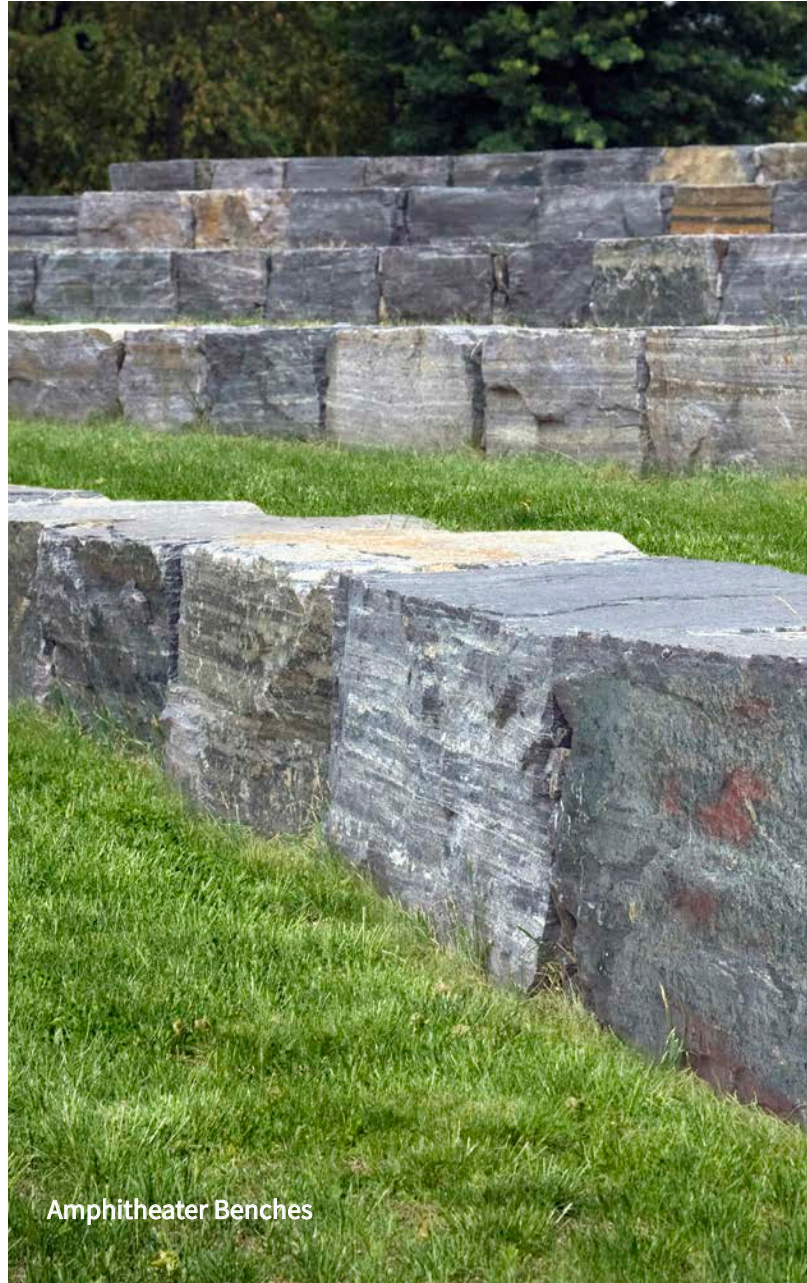
- IRREGULAR FLAGGING
- SLAB MATERIAL
- LANDSCAPING BOULDERS
- COTTAGE WALL STONE
- AMPHITHEATER BENCHES
- RETAINING WALL STONE



Irregular Flagging



Irregular Flagging



Amphitheater Benches



Special Order Wall Stone



Step Slabs



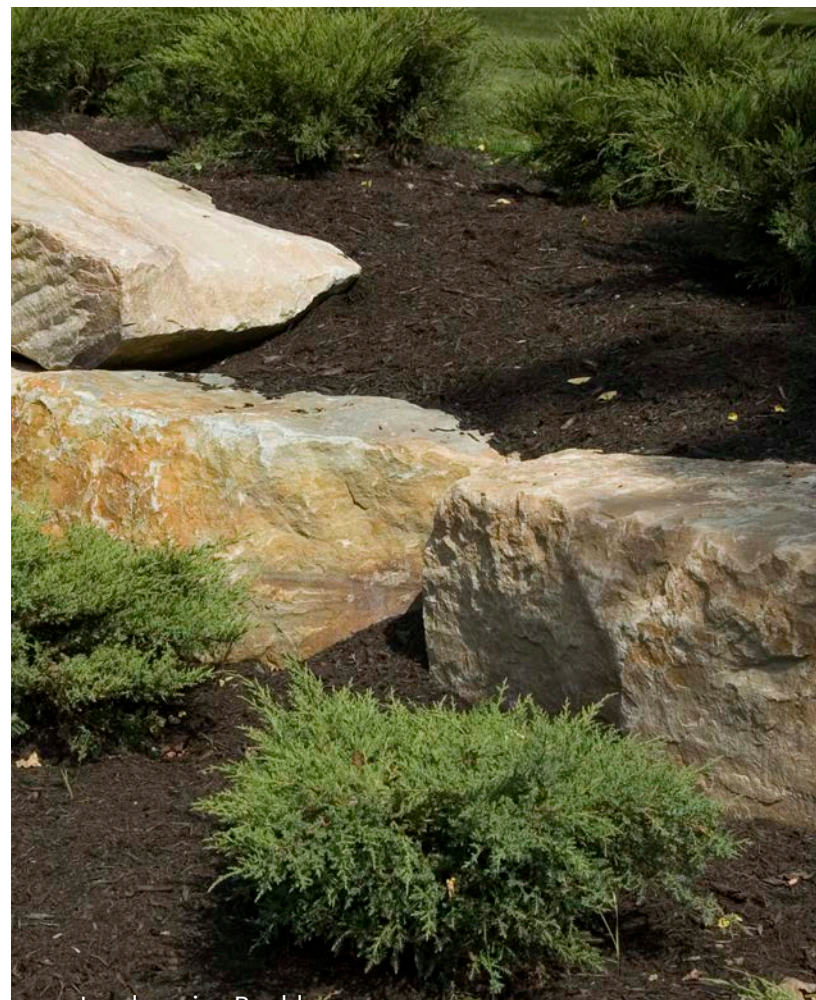
Wall Stone



Amphitheater Benches



Landscaping Boulders



Landscaping Boulders



Irregular Flagging & Wall Stone



Step Slabs

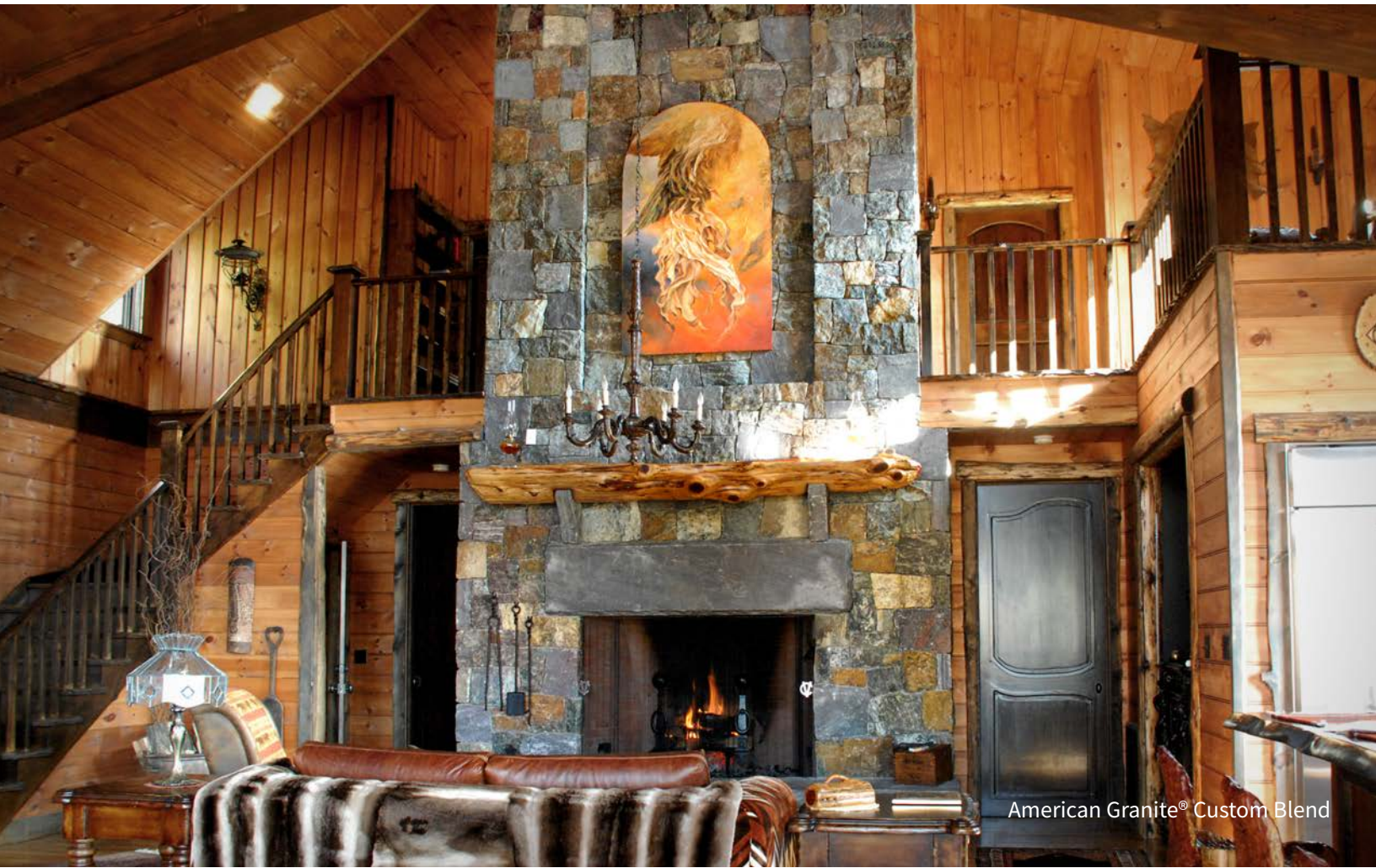


Custom Blend



Irregular Flagging

# Custom Interiors



American Granite® Custom Blend



American Granite® Custom Blend



Corinthian Granite® Custom Blend





Wood Creek Granite® Custom Blend



Saratoga Granite® Custom Blend



American Granite® Custom Blend



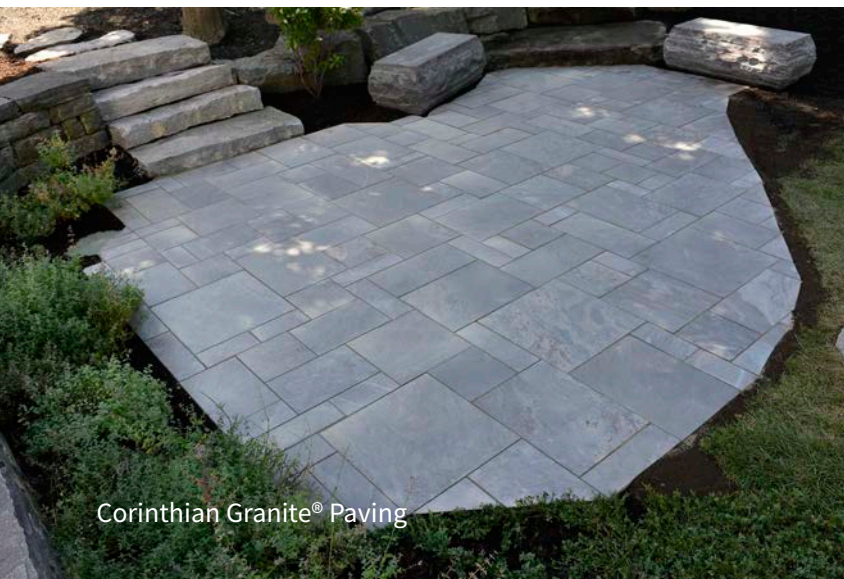
American Granite® Custom Blend



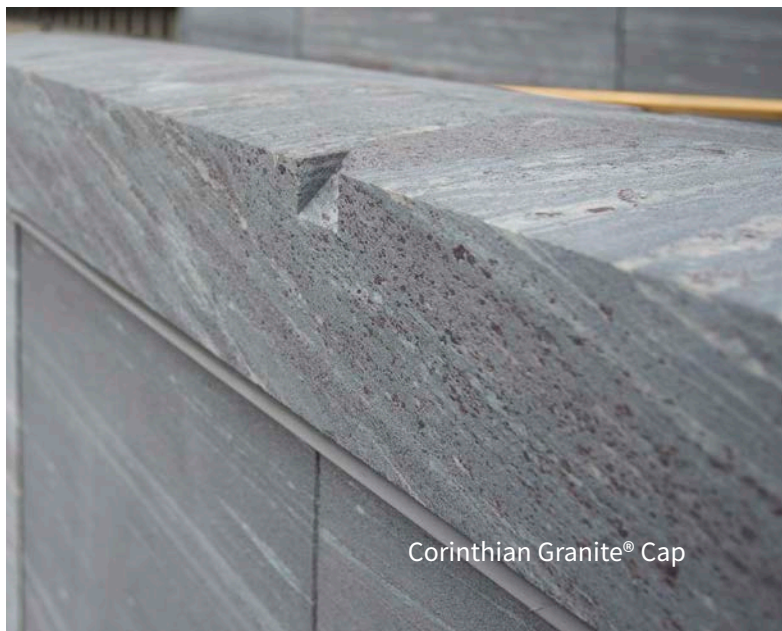


Corinthian Granite® Polished Split Face Treads

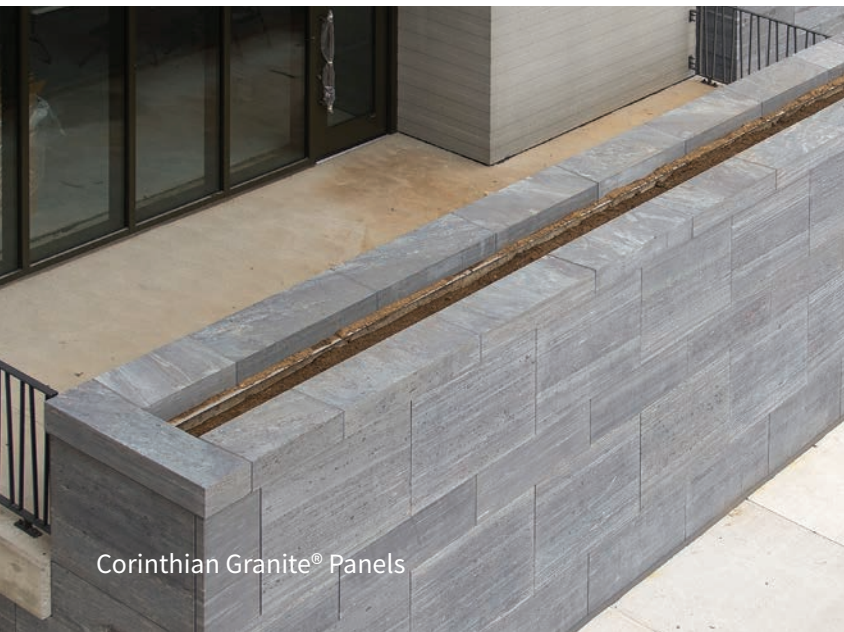
# Custom Exteriors



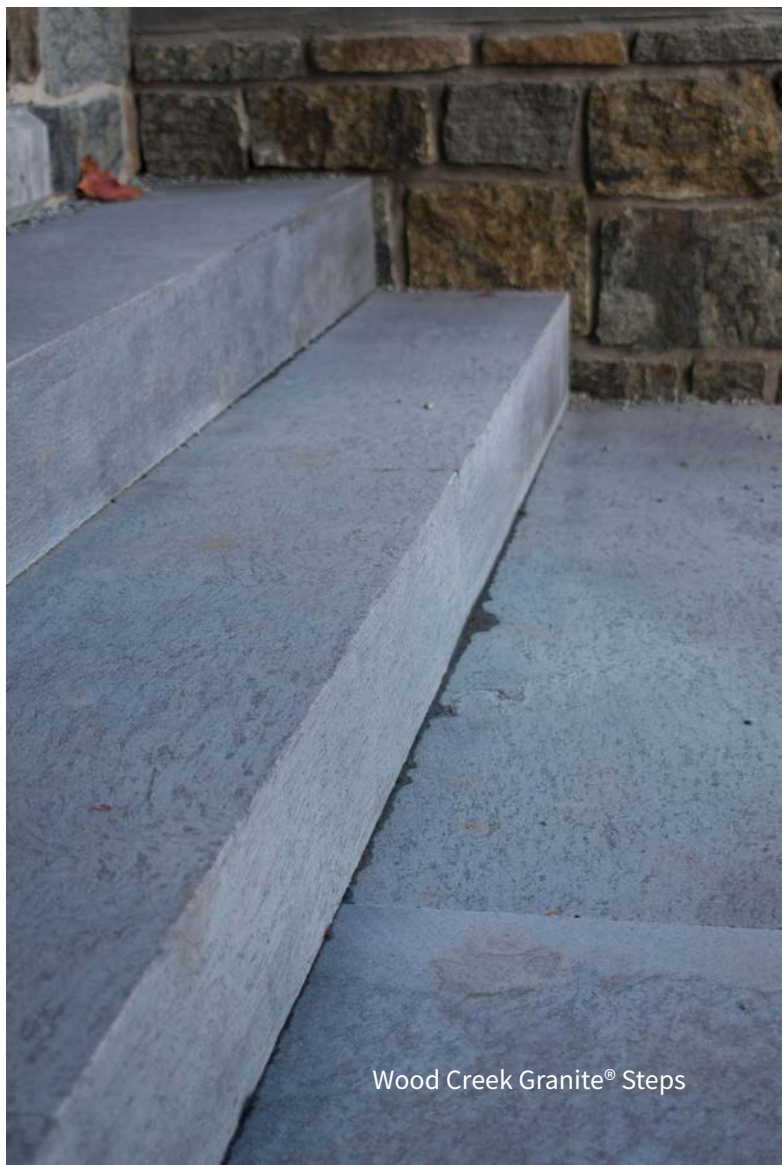
Corinthian Granite® Paving



Corinthian Granite® Cap



Corinthian Granite® Panels



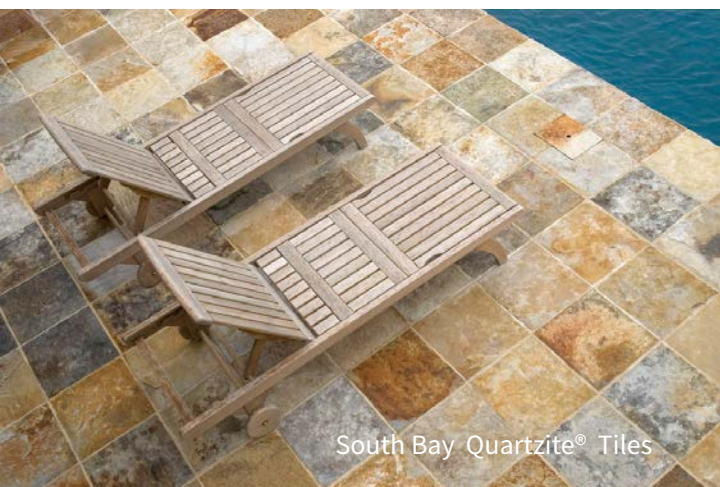
Wood Creek Granite® Steps



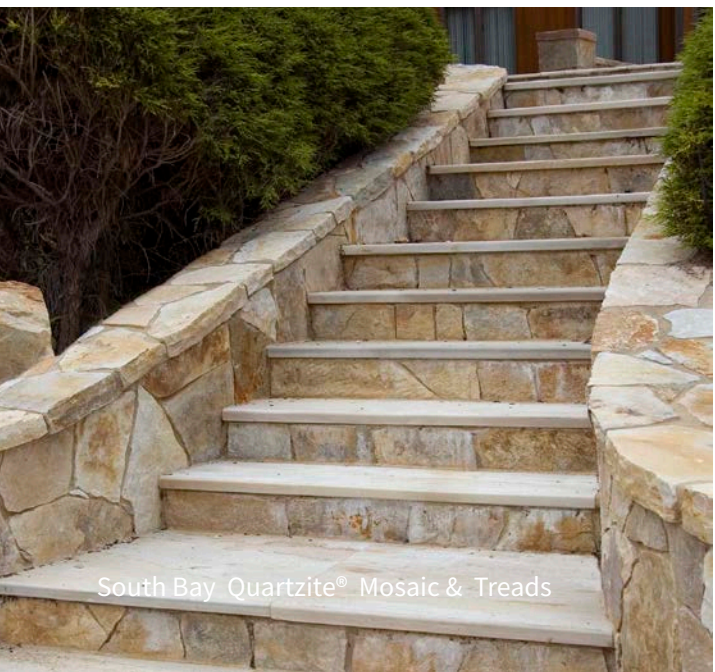
Saratoga Granite® Flagging



Corinthian Granite® Sawn Top & Bottom Benches



South Bay Quartzite® Tiles



South Bay Quartzite® Mosaic & Treads



South Bay Quartzite® Boulders & Slabs

# Mud Matters:

Aside from the cut and color of stone, the treatment of the “joints”, or spaces between the stones, will have the greatest impact on the overall finished appearance of your installation.

Factors to consider include joint width, joint style, and mortar color. Your Champlain Stone dealer and mason installer can provide additional insights as to what options and styles might work best in your particular situation and how each factor will impact the finished appearance, job schedule, and final cost.

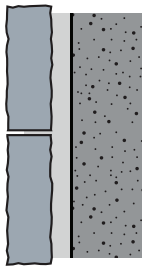
## JOINT WIDTH

Joint width and consistency impact not only the overall finished appearance, but job schedule and cost as well. Generally speaking, a narrow joint (figure A) requires a much higher level of experience on the part of the installer to achieve the desired fit and consistency. A wider joint (figure B) is more forgiving and thus requires less time and effort “working” the stone. Image A features a very narrow (1/4”) joint with the mortar “raked” back to reveal the stone edges and partial depth. Image B features a wider joint (1”) with mortar filling the gaps flush with the stone surface.

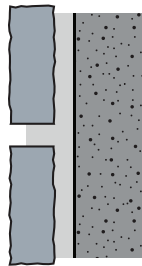


## JOINT STYLES

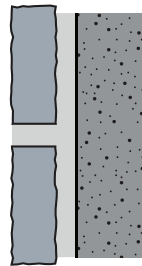
Note that naming conventions can vary by geographic region and/or masonry type (brick, block, stone, etc.)



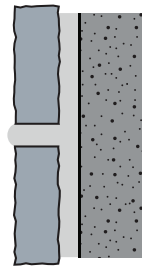
DRystack



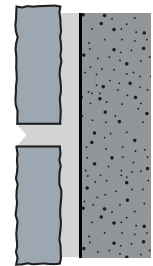
RAKED  
(Recessed)



FLUSH



BEADED  
(Rope, Grapevine, Ribbon)



V-JOINT

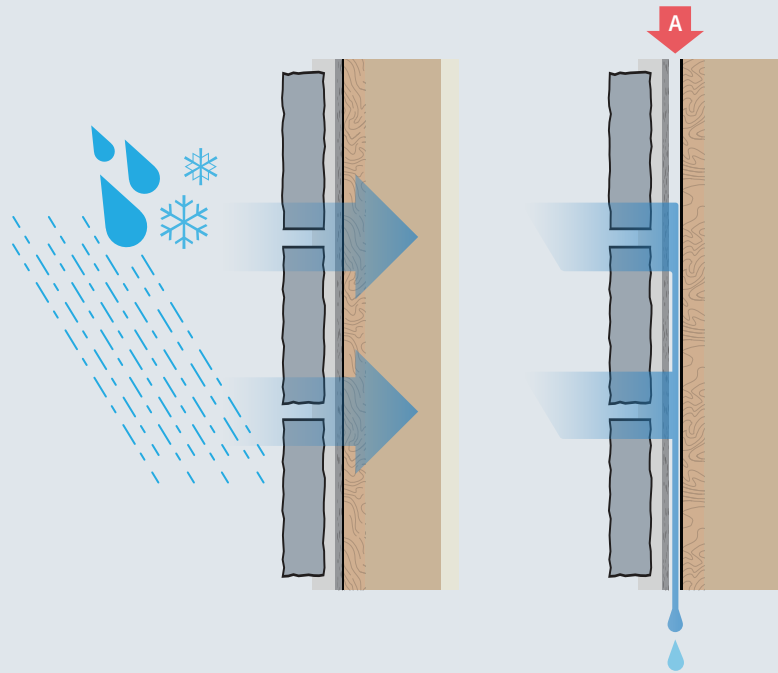
## MORTAR COLOR



Pointing mortar can be purchased in stock colors or mixed with dye to produce a custom color or hue. The base color is typically a medium gray (left) which works well to highlight the color of the stone and blend with other design elements (siding, trim, etc.). When using dyes to produce a custom color, it's important to maintain the appropriate ratio of dye to mortar to ensure color consistency throughout the installation.

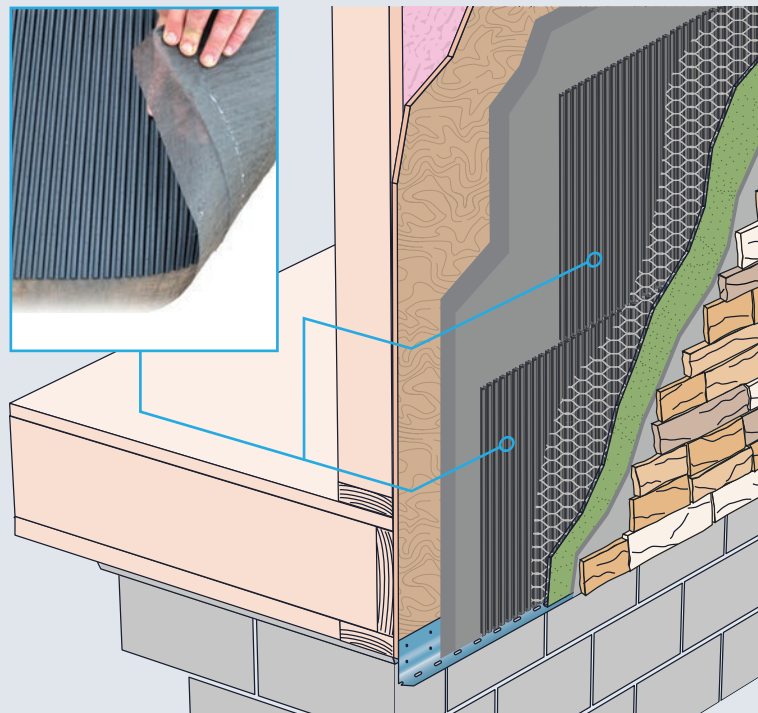
## Moisture Management:

Some thin veneer applications may require additional considerations for moisture management due to climate factors or the location of the dew point within the wall structure. Wind-driven precipitation and condensation from temperature/humidity variations can cause moisture to permeate the building envelope and accumulate within the wall cavity. This moisture can cause a variety of problems including material decay or failure, mold, and efflorescence.



**Drainage planes**, sometimes referred to as **cavity weep systems**, address the accumulation of moisture within the wall by establishing gaps (air channels) between the masonry component and structural wall unit through which water is directed out (figure A).

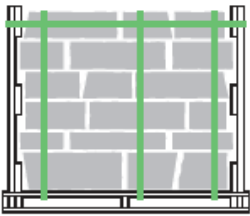
There are a variety of commercial solutions available and we encourage thoughtful research to seek out the best solution for your given application and budget. These systems typically feature a filter fabric barrier (to impede the penetration of the veneer mortar into the air gap) mated to a series of vertical channels designed to create a standoff from the sheathing and allow air and moisture to flow through. There are varying approaches to the size and structure of the channels, material construction, and overall cost. Placement within the building envelope is consistent between the lath/setting mortar and the vapor retardant layers as shown.



## material specifications

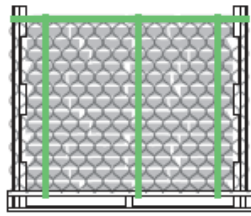
Building Stone Veneer	SIZE	FACING AREA	COVERAGE	PACKAGED WEIGHT
<b>Mosaic</b>	Thickness 3" ± to 5" ±	1/4 sq. ft. to 3 sq. ft.	35 to 40 sq. ft. per ton	2,400 to 3,225 lbs. ±
<b>Roughly Squared/ Roughly Rectangular</b>	Thickness 3" ± to 5" ±	1/4 sq. ft. to 3 sq. ft.	35 to 40 sq. ft. per ton	2,775 to 3,300 lbs. ±
<b>Ashlar</b>	Thickness 3" ± to 5" ± Height 4" ± to 12" ±	1/4 sq. ft. to 2 sq. ft.	35 to 40 sq. ft. per ton	2,700 to 3,300 lbs. ±
<b>Ledge Stone</b>	Thickness 3" ± to 5" ±, Height 3" ± to 5" ± Length 8" ± to 12" ±		35 to 40 sq. ft. per ton	2,100 to 3,150 lbs. ±

Sawn Thin Veneer	SIZE	FACING AREA	COVERAGE	PACKAGED WEIGHT
<b>Mosaic</b>	Thickness 3/4" ± to 1 1/4" ±	1/4 sq. ft. to 1 1/4 sq. ft.	150 sq. ft. dealer crate 50 sq. ft. consumer crate	2,200 to 2,700 lbs. ± 700 to 850 lbs. ±
<b>Roughly Squared/ Roughly Rectangular</b>	Thickness 3/4" ± to 1 1/4" ±	1/4 sq. ft. to 1 1/4 sq. ft.	150 sq. ft. dealer crate 50 sq. ft. consumer crate	2,200 to 2,700 lbs. ± 700 to 850 lbs. ±
<b>Ashlar</b>	Thickness 3/4" ± to 1 1/4" ±	Height 4" ± to 12" ± Length 6" ± to 20" ±	150 sq. ft. dealer crate 50 sq. ft. consumer crate	2,200 to 2,700 lbs. ± 700 to 850 lbs. ±
<b>Ledge Stone</b>	Thickness 3/4" ± to 1 1/4" ±, Height 3" ± to 5" ± Length 8" ± to 12" ±		150 sq. ft. dealer crate 50 sq. ft. consumer crate	2,200 to 2,700 lbs. ± 700 to 850 lbs. ±



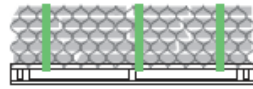
**LOW PALLET**

42" x 42" x 30"  
plus headers  
where applicable



**DEALER CRATE**

40" x 40"  
fifteen layers of stone



**DEALER CRATE**

40" x 40"  
five layers of stone

Note that listed coverages are estimates only. Actual coverage will vary based upon installation style, installer skill level, and overall job conditions.

Thin Veneer coverages are for flats. Sawn corners are packaged in units of 150 linear feet (dealer pallet), or 50 linear feet (consumer pallet). When calculating material needs, sawn corners will consume an average of 3/4 square foot of flat area per lineal foot.

Stone Cut	SIZE	FACING AREA	COVERAGE (Average)	PACKAGED WEIGHT
<b>Cottage Wall Stone</b>	Thickness 3" ± to 6" ±	1/4 sq. ft. to 2 sq. ft. ±	12-14 cubic ft. per ton	2,500-3,300 lbs. ±
<b>Irregular Flagging</b>	Thickness 1" ± to 3" ±	1/2 sq. ft. to 3 sq. ft. ±	70 sq. ft. per ton ±	2,500-3,300 lbs. ±
<b>Step Slab Material</b>	Thickness 3" ± to 8" ±	LENGTH: 30" to 60" ±	Varies with selection	3,500-4,200 lbs. ±
<b>Landscape Boulders</b>	Clusters of 50 lbs. to 300 lbs. ±, or 500 lbs. +			3,000-4,000 lbs. ±